

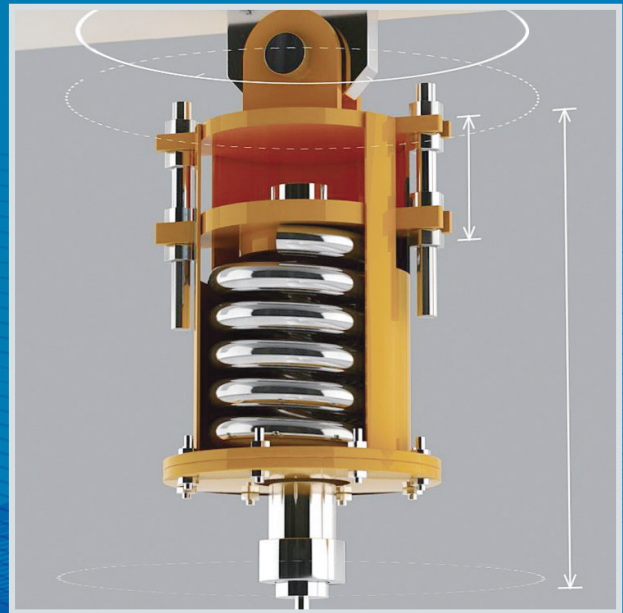
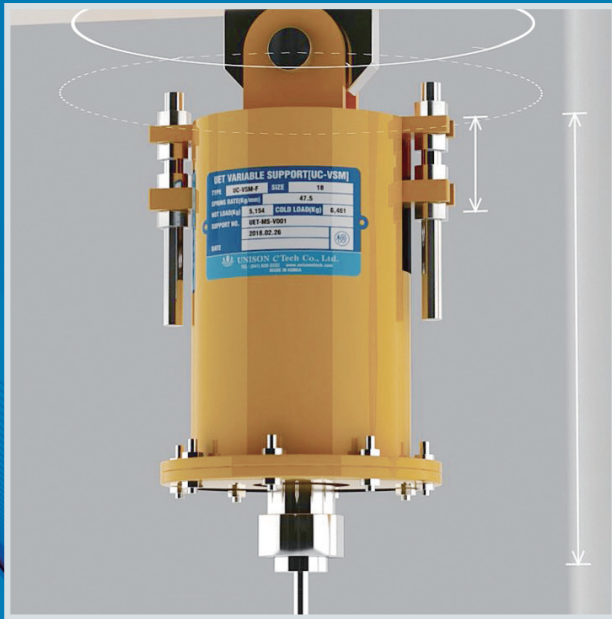


# PIPE SUPPORT

We are a high performance company in the sector of pipe hangers and supports  
The Longest History of Manufacturing Piping support Products in Korea  
Pipe supports professional for industry



# Variable Spring Hanger & Support

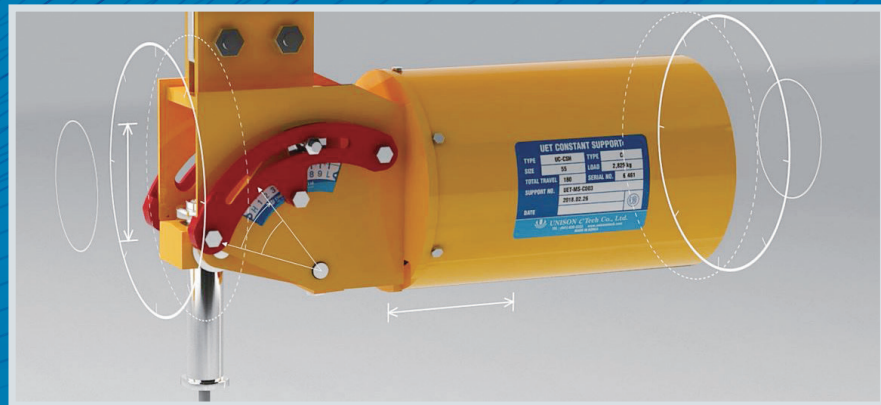
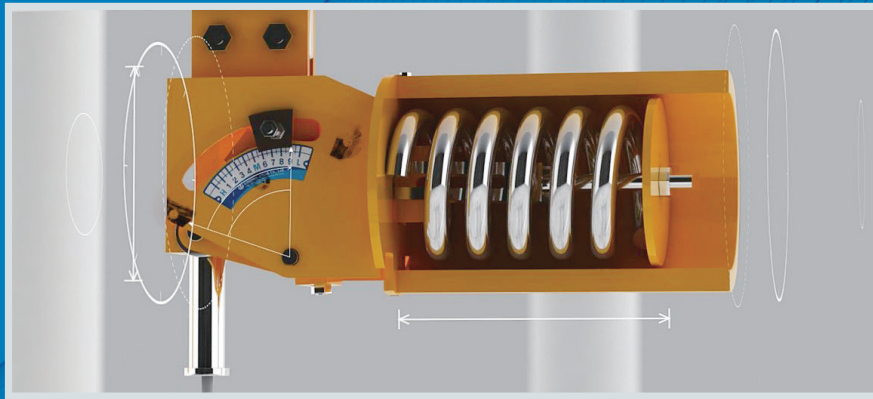


- Variable spring hangers provide economical support for piping systems with vertical thermal expansion. This product is typically used where variation between the operating and installed loads can be tolerated.

- **Maximum Available Load : 40 tons**



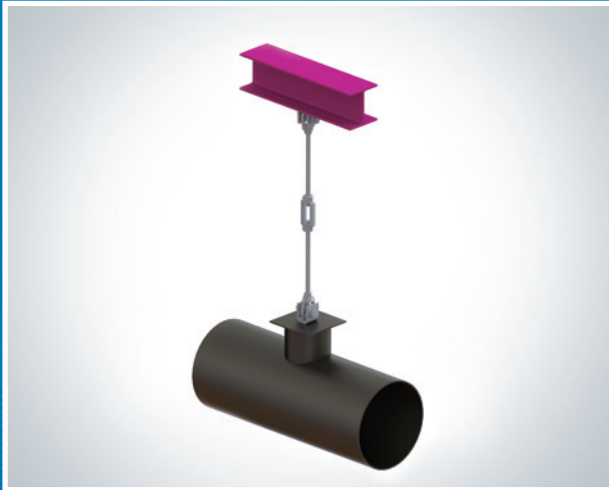
# Constant Spring Hanger & Support



- Constant spring hangers assure perfectly constant support through the entire deflection of the pipe load. This counter-balancing of the load and spring moments about the main pivot is obtained by the use of carefully designed compression type load springs, lever, and spring tension rods.

- **Maximum Available Load : 40 tons**

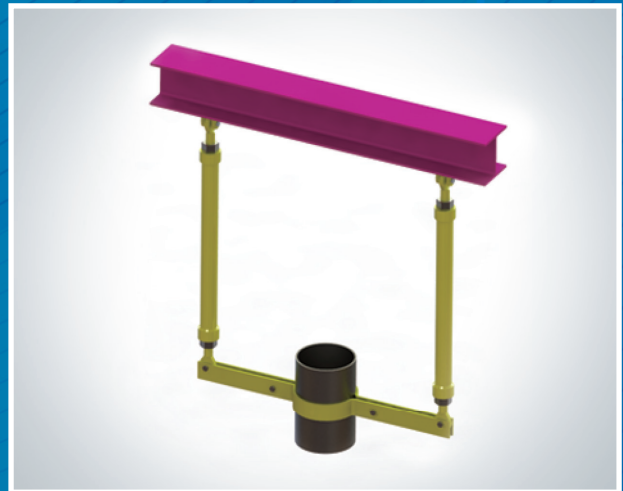
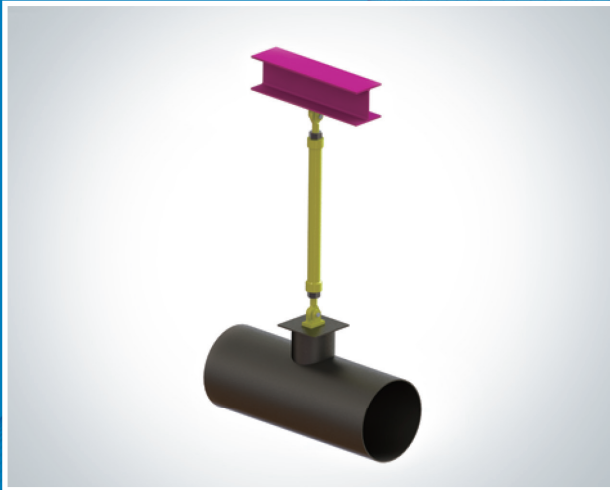
# Rigid Hanger & Support



- Be used in supporting only vertical load for pipe which does not have any movement.
- For Pressure Part, Normal Part
- **ROD Metric Screw Thread Size Selection:** UET Standard

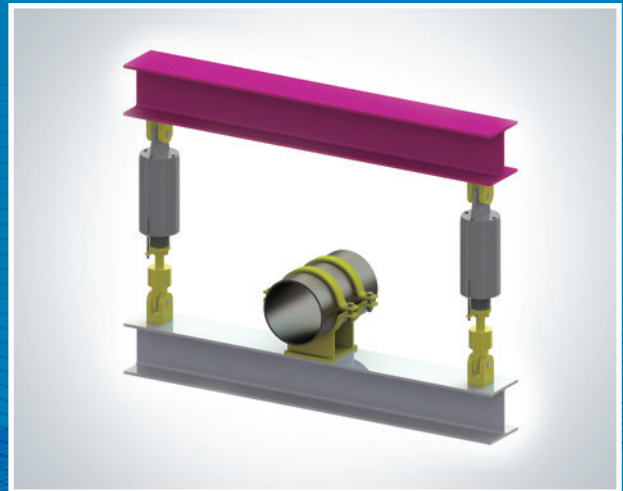
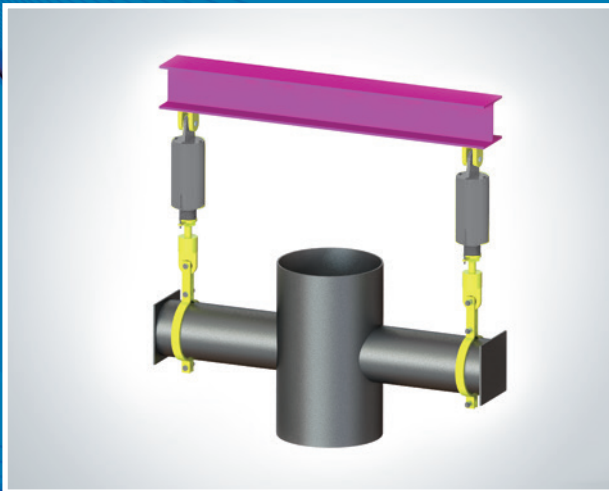
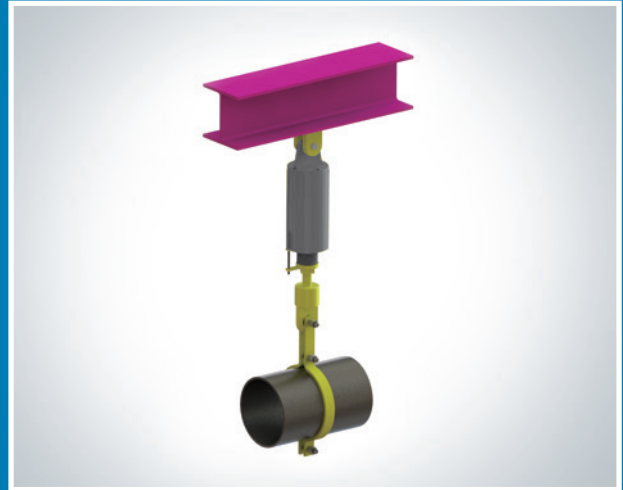
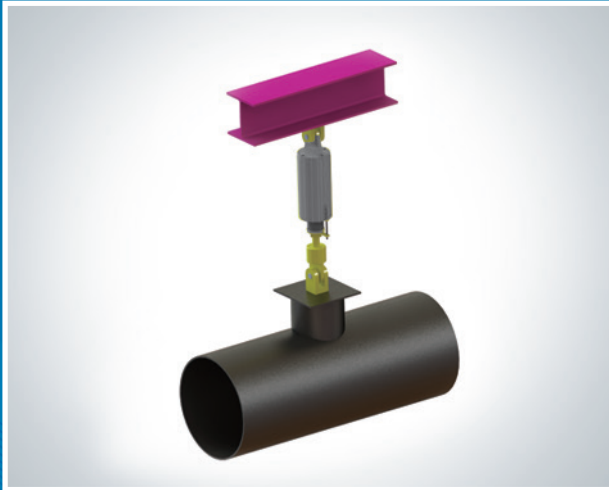


# Sway Strut



- Sway struts provide double acting restraining forces along the axis of the strut due to thermal expansion or contraction.
- Rigid struts form a rigid connection in the axial direction between the piping and the structure. As the rigid strut has articulated connection points, limited movement of the pipe is permitted within the angular movement of the struts without resistance.
- **Maximum Available Load : 54 tons**

# Hydraulic Snubber



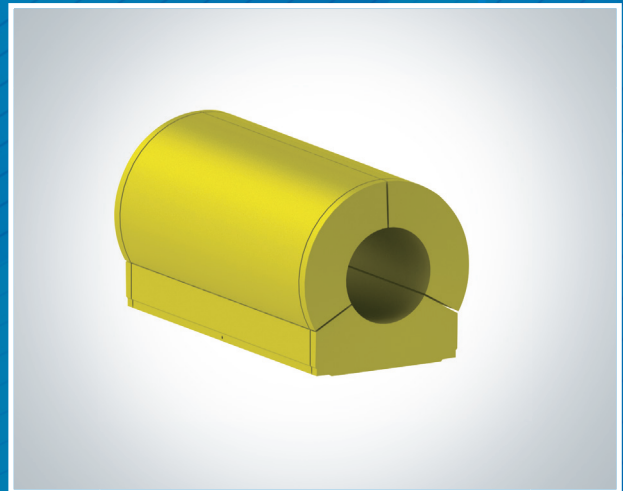
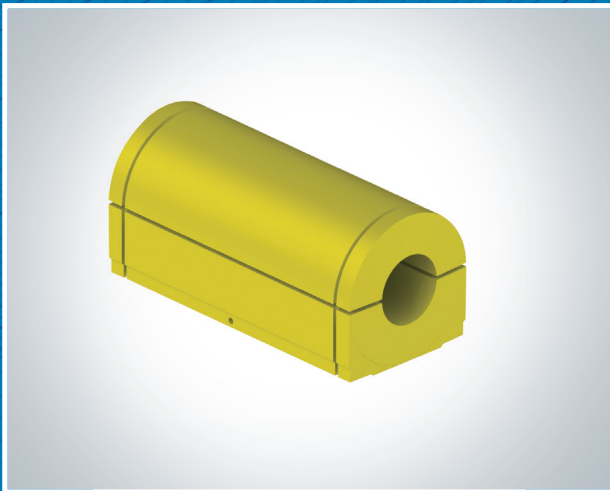
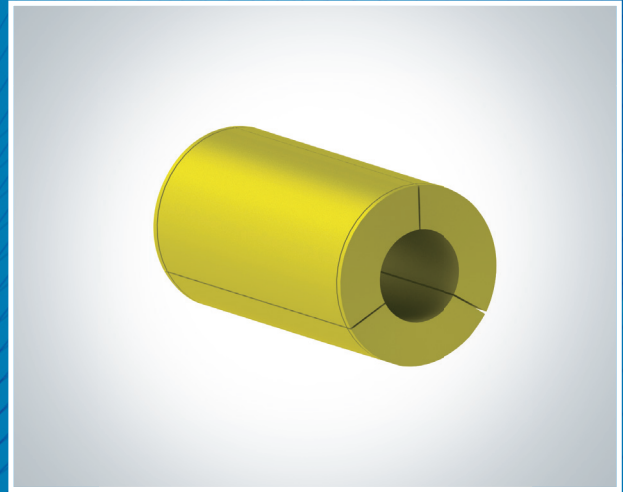
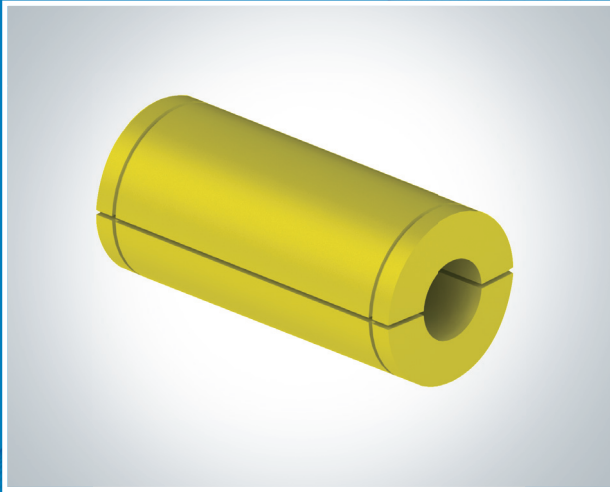
- Hydraulic Snubbers restrain undesirable displacement of piping system or components when they are about to oscillate due to seismic or other types of dynamic loading, while, to allow their free movement during the thermal displacement mode.

- **Assembly type**

- 1) Type EA : With extension attachments, for a longer installation length.
- 2) Type FA : With the shortest attachments, for a limited installation length.

- **Maximum Available Load : 100 tons**

# Cold Support (Cryogenic Support)



- A cold shoe is a pipe support used for cryogenic applications where heat transferred to the surface is not desirable. A pipe anchor is a support used to anchor cryogenic pipes for axial, lateral, and rotational loads. These supports can be used for temperatures down to  $-196^{\circ}\text{C}$ .
- **Applicable area** : LPG, LNG Terminal, Petrochemical Plant
- **Main Material** : 1) Polyurethane, 2) Compressed & shaped wood



Industrial plant design

# UNISON eTech



## Major Customers

### Domestic



### Overseas



### End-User



 UNISON eTech Co., Ltd.

[www.unisonetech.com](http://www.unisonetech.com)

53 Ugakgol-Gil, Susin-Myeon, Dongnam-Gu, Cheonan-Si, Chungcheongnam-Do, 31252, Rep. of Korea  
TEL : +82.41.620.3374 FAX : +82.41.552.3332 PLANT EMAIL : plant@uet.co.kr